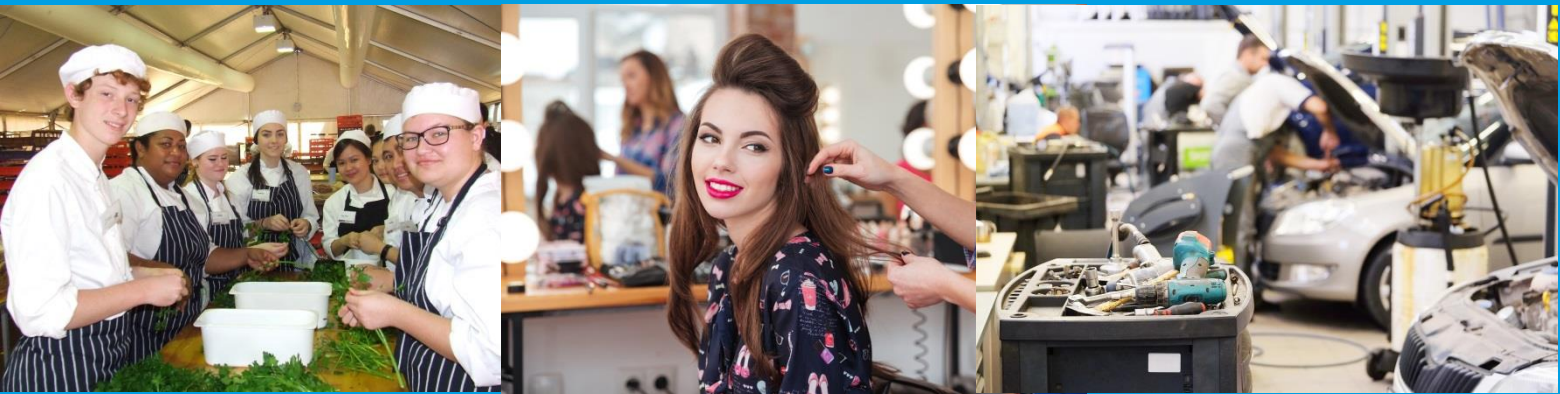


Pre-enrolment Information



CHC40413 Certificate IV in Youth Work Geraldton Campus (Flexible Delivery Mode)

Training Package Version 5

PRE-ENROLMENT INFORMATION

about myCourse

WHY CHOOSE TAFE?

More courses, more qualifications, more places to learn. Full time, part time, on campus, online, in your workplace or any combination of these.

With more than 980 TAFE qualifications to choose from, delivered by five TAFE colleges at campuses right across Western Australia, there are more opportunities than ever for you to make your name.

From Certificate I to Advanced Diploma level, TAFE specialises in combining theory with practical training in industry relevant learning environments. This ensures you are well equipped with the skills you need to enter the workforce, gain a promotion or undertake further study via one of our university pathways upon completion of your qualification.

For more information about TAFE and Central Regional TAFE, check out our website at www.centralregionaltafe.wa.edu.au

Tutor Contact Details

Janine Gerard

Janine.gerard@crtafe.wa.edu.au

08 9956 6138

PRE-ENROLMENT INFORMATION

about myCourse

Course Information

Course Title	CHC40413 Certificate IV in Youth Work Release 5 (Flexible Delivery Mode)
<p>This qualification reflects the role of community service workers who design and deliver person-centred services to individuals and/or groups. Workers may provide support, advocacy or interventions to individual clients, groups or communities across a range of services.</p> <p>At this level, workers may be autonomous with limited responsibility within established parameters and may be required to supervise and lead other workers in projects or teams. Work may take place in a range of community service, case work or case management contexts.</p>	
Packaging Information	<p>14 core units 4 elective units, consisting of:</p> <ul style="list-style-type: none"> at least 2 must be selected from the listed electives below up to 2 units may be selected from any endorsed Training Packages or accredited courses relevant to the work outcome. <p>All electives chosen must contribute to a valid, industry supported vocational outcome.</p>
Duration	1 – 2 years
Location	Geraldton

Unit of competency (National code and title)	Core or Elective	Pre- requisite	Amount of training (For the standard learner, suggested hours may change based on needs of individual learners)
Study Plan			
<p>Study and placement are divided up into 5 stages as the qualification requires competency to be demonstrated in industry on placement or workplace simulation before a pass can be given for all units. As flexi study is self-paced, please remember most students are able to complete the 13 units and 120 hrs of placement within 6 months and you are encouraged to accelerate the timelines below.</p>			
Stage One Units			
CHCCOM002 Use communication to build relationships	Core	NA	<p>Completing prescribed reading and activities in learner guide 30 hours Prescribed assessment activities 4 hours Placement in industry 7 hours Total hours 41</p>

PRE-ENROLMENT INFORMATION

about myCourse

CHCLEG001 Work legally and ethically	Core	NA	<p>Completing prescribed reading and activities in learner guide 36 hours</p> <p>Prescribed assessment activities 4 hours</p> <p>Placement in industry 7 hours</p> <p>Total hours 47</p>
HLTWS001 Participate in workplace health and safety	Core	NA	<p>Completing prescribed reading and activities in learner guide 26 hours</p> <p>Prescribed assessment activities 4 hours</p> <p>Placement in industry 6 hours</p> <p>Total hours 36</p>
Stage Two Units			
CHCDIV001 Work with diverse people	Core	NA	<p>Completing prescribed reading and activities in learner guide 26 hours</p> <p>Prescribed assessment activities 3 hours</p> <p>Placement in industry 5 hours</p> <p>Total hours 34</p>
CHCDIV002 Promote Aboriginal and/or Torres Strait Islander cultural safety	Core	NA	<p>Completing prescribed reading and activities in learner guide 26 hours</p> <p>Prescribed assessment activities 3 hours</p> <p>Placement in industry 5 hours</p> <p>Total hours 34</p>
Stage Three Units			

PRE-ENROLMENT INFORMATION

about myCourse

CHCPRP001 Develop and maintain networks and collaborative partnerships	Elective	NA	<p>Completing prescribed reading and activities in learner guide 36 hours</p> <p>Prescribed assessment activities 5 hours</p> <p>Placement in industry 10 hours</p> <p>Total hours 51</p>
CHCGRP002 Plan and conduct group activities	Core	NA	<p>Completing prescribed reading and activities in learner guide 36 hours</p> <p>Prescribed assessment activities 10 hours</p> <p>Placement in industry 10 hours</p> <p>Total hours 53</p>
CHCCDE003 Work within a community development framework	Core	NA	<p>Completing prescribed reading and activities in learner guide 36 hours</p> <p>Prescribed assessment activities 4 hours</p> <p>Placement in industry 10 hours</p> <p>Total hours 50</p>
Stage Four Units			
CHCADV001 Facilitate the interests and rights of clients	Elective	NA	<p>Completing prescribed reading and activities in learner guide 36 hours</p> <p>Prescribed assessment activities 8 hours</p> <p>Placement in industry 8 hours</p> <p>Total hours 46</p>

PRE-ENROLMENT INFORMATION

about myCourse

CHCCCS004 Assess co-existing needs	Elective	NA	<p>Completing prescribed reading and activities in learner guide 36 hours</p> <p>Prescribed assessment activities 8 hours</p> <p>Placement in industry 8 hours</p> <p>Total hours 56</p>
CHCMHS001 Work with people with mental health issues	Core	NA	<p>Completing prescribed reading and activities in learner guide 36 hours</p> <p>Prescribed assessment activities 4 hours</p> <p>Placement in industry 8 hours</p> <p>Total hours 50</p>
CHCCCS009 Facilitate responsible behaviour	Elective	NA	<p>Completing prescribed reading and activities in learner guide 26 hours</p> <p>Prescribed assessment activities 3 hours</p> <p>Placement in industry 6 hours</p> <p>Total hours 34 hours</p>
Stage Five Units			
CHCPRT001 Identify and respond to children and young people at risk	Core	NA	<p>Completing prescribed reading and activities in learner guide 18 hours</p> <p>Prescribed assessment activities 3 hours</p> <p>Placement in industry 10 hours</p> <p>Total hours 31 hours</p>

PRE-ENROLMENT INFORMATION

about myCourse

CHCYTH001 Engage respectfully with young people	Core	NA	<p>Completing prescribed reading and activities in learner guide 36 hours</p> <p>Prescribed assessment activities 4 hours</p> <p>Placement in industry 10 hours</p> <p>Total hours 50</p>
CHCYTH002 Work effectively with young people in the youth work context	Core	NA	<p>Completing prescribed reading and activities in learner guide 36 hours</p> <p>Prescribed assessment activities 10 hours</p> <p>Placement in industry 10 hours</p> <p>Total hours 56</p>
CHCYTH003 Support young people to create opportunities in their lives	Core	NA	<p>Completing prescribed reading and activities in learner guide 26 hours</p> <p>Prescribed assessment activities 3 hours</p> <p>Placement in industry 6 hours</p> <p>Total hours 34 hours</p>
CHCYTH004 Respond to critical situations	Core	NA	<p>Completing prescribed reading and activities in learner guide 50 hours</p> <p>Prescribed assessment activities 10 hours</p> <p>Placement in industry 20 hours</p> <p>Total hours 80</p>

PRE-ENROLMENT INFORMATION

about myCourse

CHCYTH010 Provide services for young people appropriate to the needs and circumstances	Core	NA	Completing prescribed reading and activities in learner guide 50 hours Prescribed assessment activities 10 hours Placement in industry 20 hours Total hours 80
--	------	----	---

Entry Requirements

Search for your course on our website at www.centralregionaltafe.wa.edu.au and you can find detail on the entry requirements for this course.

Career Pathways

Your course provides you with skills and knowledge to enter the workforce in varied job roles as well as further education. Details can be found on our website at www.centralregionaltafe.wa.edu.au

Course Costs

You will find detailed information about your course costs and how the costs are compiled on the Central Regional TAFE website here :

<http://www.centralregionaltafe.wa.edu.au/futurestudents/feespaymentoptions>

Alternatively, check the drop down box for FEES on your course page on the website which will also have details about the course fees.

Students are required to purchase a workbook for each unit after enrolment. The workbooks may be purchased/ordered from the Library.

Textbooks and Learning Materials

Our physical and online library has a wide range of written and electronic resources useful to your course. You can find our online library on the Central Regional TAFE website at :

<http://www.centralregionaltafe.wa.edu.au/currentstudents/librarybookshop>

For on campus students your learning materials for each unit will be provided to you as you progress through the semester and the price is incorporated in your enrolment fees. If you are enrolled off campus other information about your learning materials and purchases will be provided with your enrolment.

PRE-ENROLMENT INFORMATION

about myCourse

Students are required to purchase a workbook for each unit after enrolment. The workbooks may be purchased/ordered from the Library.

Other Course Requirements

Some courses may require you to provide additional resources such as Personal Protective Equipment (PPE) or uniforms. A list is provided below.

Legal requirements:

National Police Clearance (valid for 2 years). Working with Children Check (valid for 3 years).

Transport:

Part of the Community Services course may require you to attend work placement at agencies in Geraldton. You will need to arrange your own transport to and from the agencies during work placement. You may also be required to attend Central Regional TAFE for workshops during your course. You will need to arrange your own transport to and from Central Regional TAFE.

Students may find Blendspace useful

To access Blendspace use Google Chrome as your browser and access at the following address: <https://www.tes.com/lessons/>

Follow the procedure outlined and join Blendspace as a student (no cost). Once you have registered, click on the join class button and add the Blendspace Code **vgeh**. You will then have access to additional information on each unit.

The Blendspace resource will be added to throughout the year, so check it regularly if you find it helpful.

Work Placement

Work Placement provides a practical opportunity for students to develop skills in real life situations. Work placement is required for this course. Your TAFE tutor will contact you near the completion of the first unit of the first stage of the course. You will need to complete the theory component of the unit before placement can start. Your tutor will consult with you regarding placement options, preferably within your local area.

WORK PLACEMENT

To achieve this qualification, you must complete 120 hours of work placement:

In Stage 1 you will complete 3 units of theory AND 20 hrs of work placement in a community services agency within six (6) months from enrolment date for the 1st unit of stage 1.

In Stage 2 you will complete 2 units of theory AND 10hrs of work placement in a community services agency within six (6) months from enrolment date for the 1st unit of stage 2.

PRE-ENROLMENT INFORMATION

about myCourse

In Stage 3 you will complete 3 units of theory AND 30 hrs of work placement in a community services agency within six (6) months from enrolment date for the 1st unit of stage.

In Stage 4 you will complete 4 units of theory AND 24 hrs of work placement in a community services agency within six (6) months from enrolment date for the 1st unit of stage.

In Stage 5 you will complete 5 units of theory AND 36 hrs of work placement in a community services agency within six (6) months from enrolment date for the 1st unit of stage.

Depending on where you are placed, some organisations will require you to attend an interview to determine suitability for the organisations or to receive an induction. Prior to commencement of placement you will be advised by the TAFE lecturer who to contact to arrange a time for the interview/induction. In addition you may be asked to complete student application forms and/or a confidentiality statement prior to commencing your placement.

STUDY OPTIONS

Central Regional TAFE aims to provide varied options for study to suit your needs. Not all courses are available at all campuses in the same way.

The following options are available in this course at this campus. For additional information about flexible study options at all of our campuses please check the courses pages on the Central Regional TAFE website.

This course is also available as a face to face option (Combined with CHC42015 Certificate IV in Community Services). When undertaken in the classroom the following applies:

- 1 year, full time, 2 years part time, 3 days per week full time
- Students are expected to allow a minimum of 4 hours home study time

YOUR TIMETABLE

For students enrolled through a Flexible Delivery mode at Geraldton Campus a set timetable is not used. You will be given a student training plan for each unit you are enrolled in which details activities and assessments required for each unit and the suggested timeline for completion. Some units may require students to attend simulated practice on the Central Regional TAFE campus to develop skills which will be required on work placement. These simulated practice sessions will be detailed on the student training plan for each unit.