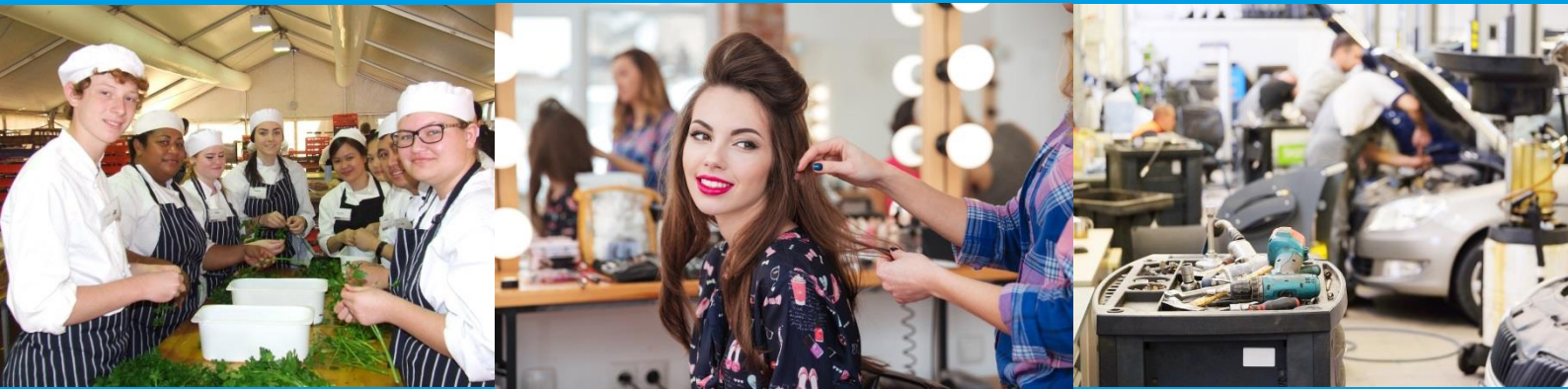


Pre-enrolment Information



CUA31115 Certificate III in Visual Art Release 2

Geraldton

PRE-ENROLMENT INFORMATION

WHY CHOOSE TAFE?

More courses, more qualifications, more places to learn. Full time, part time, on campus, online, in your workplace or any combination of these.

With more than 980 TAFE qualifications to choose from, delivered by five TAFE colleges at campuses right across Western Australia, there are more opportunities than ever for you to make your name.

From Certificate I to Advanced Diploma level, TAFE specialises in combining theory with practical training in industry relevant learning environments. This ensures you are well equipped with the skills you need to enter the workforce, gain a promotion or undertake further study via one of our university pathways upon completion of your qualification.

For more information about TAFE and Central Regional TAFE, check out our website at www.centralregionaltafe.wa.edu.au

PRE-ENROLMENT INFORMATION

about myCourse

Course Information

Course Title	CUA31115 Certificate III in Visual Art (release 2)
This qualification reflects the role of individuals who are developing a range of visual art skills and who take responsibility for own outputs in work and learning.	
Packaging Information	Total number of units = 12 4 core units plus 8 elective units
Duration	12 months - 2 Semesters
Location	Geraldton

Unit of competency (National code and title)	Core or Elective	Pre-requisite	Amount of training (For the standard learner, suggested hours may change based on needs of individual learners)
BSBWHS201 Contribute to health and safety of self and others	Core		<ul style="list-style-type: none"> • 2 x 5hrs Face to face classes Total = 10 hours • Practical application of knowledge and skills ongoing over enrolment period • Assessment preparation 5 hours
CUAACD120 Develop drawing skills to communicate ideas	Core		<ul style="list-style-type: none"> • 10 x 5hrs Face to face classes Total = 50 hours • Practical application of knowledge and skills self-paced 3x5 hours • Assessment preparation 5 hours
CUAPPR301 Produce Creative Work	Core		<ul style="list-style-type: none"> • 5 x 5hrs Face to face classes Total = 25 hours • Practical application of knowledge and skills self-paced 2x5 hours • Assessment preparation 5 hours
CUARES301 Apply knowledge of history and theory to own arts practice	Core		<ul style="list-style-type: none"> • 9 x 5hrs Face to face classes Total = 45 hours • Practical application of knowledge and skills self-paced 2x5 hours • Assessment preparation 5 hours
BSBDES201 Follow a Design Process	Elective		<ul style="list-style-type: none"> • 5 x 5hrs Face to face classes Total = 25 hours • Practical application of knowledge and skills self-paced 2x5 hours • Assessment preparation 5 hours
BSBDES301 Explore the use of colour	Elective		<ul style="list-style-type: none"> • 5 x 5hrs Face to face classes Total = 25 hours • Practical application of knowledge and skills self-paced 2x5 hours • Assessment preparation 5 hours
BSBDES302 Explore and apply the creative design process to 2D forms	Elective		<ul style="list-style-type: none"> • 6 x 5hrs Face to face classes Total = 30 hours • Practical application of knowledge and skills self-paced 2x5 hours • Assessment preparation 5 hours

PRE-ENROLMENT INFORMATION

about myCourse

Unit of competency (National code and title)	Core or Elective	Pre-requisite	Amount of training (For the standard learner, suggested hours may change based on needs of individual learners)
CUACER301 Produce Ceramics	Elective		<ul style="list-style-type: none">• 6 x 5hrs Face to face classes Total = 30 hours• Practical application of knowledge and skills self-paced 2x5 hours• Assessment preparation 5 hours
CUAGLA201 Develop Glass-working skills	Elective		<ul style="list-style-type: none">• 5x 5hrs Face to face classes Total = 25 hours• Practical application of knowledge and skills self-paced 2x5 hours• Assessment preparation 5 hours
BSBWOR203 Work Effectively with others	Elective		<ul style="list-style-type: none">• 3 x 5hrs Face to face classes Total = 15 hours• Practical application of knowledge and skills self-paced 2x5 hours• Assessment preparation 5 hours
BSBWOR202 Organise and complete daily work activities	Elective		<ul style="list-style-type: none">• 2 x 5hrs Face to face classes Total = 10 hours• Practical application of knowledge and skills self-paced 2x5 hours• Assessment preparation 5 hours
CUAPRI301 Produce Prints	Elective		<ul style="list-style-type: none">• 6 x 5hrs Face to face classes Total = 30 hours• Practical application of knowledge and skills self-paced 2x5 hours• Assessment preparation 5 hours

Entry Requirements

Search for your course on our website at www.centralregionaltafe.wa.edu.au and you can find detail on the entry requirements for this course.

Career Pathways

Your course provides you with skills and knowledge to enter the workforce in varied job roles as well as further education. Details can be found on our website at www.centralregionaltafe.wa.edu.au

Course Costs

You will find detailed information about your course costs and how the costs are compiled on the Central Regional TAFE website here :

<http://www.centralregionaltafe.wa.edu.au/futurestudents/feespaymentoptions>

Alternatively, check the drop down box for FEES on your course page on the website which will also have details about the course fees.

PRE-ENROLMENT INFORMATION

about myCourse

Textbooks and Learning Materials

Our physical and online library has a wide range of written and electronic resources useful to your course.

You can find our online library on the Central Regional TAFE website at :

<http://www.centralregionaltafe.wa.edu.au/currentstudents/librarybookshop>

For on campus students your learning materials for each unit will be provided to you as you progress through the semester and the price is incorporated in your enrolment fees. If you are enrolled off campus other information about your learning materials and purchases will be provided with your enrolment.

Other Course Requirements

Some courses may require you to provide additional resources such as Personal Protective Equipment (PPE) or uniforms. A list is provided below.

Enclosed footwear

Work Placement

Work Placement provides a practical opportunity for students to develop skills in a real life situations. A work placement is required for this course.

No formal work placement requirements.

STUDY OPTIONS

Central Regional TAFE aims to provide varied options for study to suit your needs. Not all courses are available at all campuses in the same way.

The following options are available in this course at this campus. For additional information about flexible study options at all of our campuses please check the courses pages on the Central Regional TAFE website.

- *1 year, full time, 1 day per week (Thursday 9am-3pm) Semester 1 & 2.*
- *Students may also study part-time unit by unit*

PRE-ENROLMENT INFORMATION

about myCourse

YOUR TIMETABLE

Geraldton Campus students can locate their Timetables from the myPortal page on the Central Regional TAFE website.

You can also subscribe to your timetable so that you can view in your own Calendar. Details on how to subscribe to your

Calendar can be found on the myTimetable link in the Student Portal.

TIME	MONDAY	TUESDAY	WEDNESDAY	THURSDAY	FRIDAY
8:30am- 12:00 am	Self-paced Studio access	Self-paced Studio access	Self-paced Studio access	Central Regional TAFE Room – Art Department	Self-paced Studio access
12:00-12:30 LUNCH BREAK					
12:30pm- 3:00pm	Self-paced Studio access	Self-paced Studio access	Self-paced Studio access	Central Regional TAFE Room – Art Department	Self-paced Studio access