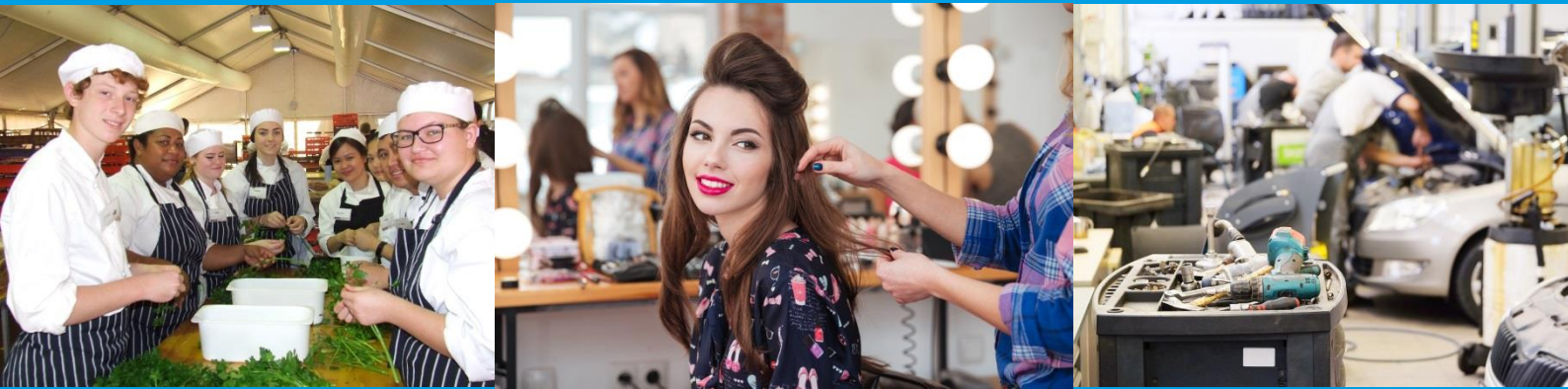


Pre-enrolment Information



SIT20116

Certificate II in Tourism

Geraldton Campus

Semester 2 - 2019

Training Package Version

PRE-ENROLMENT INFORMATION

WHY CHOOSE TAFE?

More courses, more qualifications, more places to learn. Full time, part time, on campus, online, in your workplace or any combination of these.

With more than 980 TAFE qualifications to choose from, delivered by five TAFE colleges at campuses right across Western Australia, there are more opportunities than ever for you to make your name.

From Certificate I to Advanced Diploma level, TAFE specialises in combining theory with practical training in industry relevant learning environments. This ensures you are well equipped with the skills you need to enter the workforce, gain a promotion or undertake further study via one of our university pathways upon completion of your qualification.

For more information about TAFE and Central Regional TAFE, check out our website at www.centralregionaltafe.wa.edu.au

Course Information

Course Title	SIT20116 - Certificate II in Tourism
<p>This qualification reflects the role of individuals who have a defined and limited range of tourism operational skills and basic industry knowledge. They are involved in mainly routine and repetitive tasks and work under direct supervision.</p> <p>This qualification provides a pathway to work in many tourism and travel industry sectors and for a diverse range of employers including travel agencies, tour wholesalers, tour operators, attractions, cultural and heritage sites, and any small tourism business.</p> <p>Work could be undertaken in an office environment where the planning of tourism and travel products and services takes place, in the field where products are delivered, or a combination of both.</p>	
Packaging Information	<p>Eleven (11) units must be completed:</p> <p>Four (4) core units and Seven (7) elective units</p>
Duration	1 Semester , 2 Terms
Location	Geraldton

Unit of competency (National code and title)	Core or Elective	Pre-requisite	Amount of training (For the standard learner, suggested hours may change based on needs of individual learners)
SITTIND001 Source and use information on the tourism and travel industry	Core		Practical demonstration and learner practise 10 hours throughout course Lecturer presentation and progression through learning activities 10 hours.
SITXCCS006 Provide service to customers	Imported elective		Practical demonstration and learner practise 5 hours throughout course Lecturer presentation and progression through learning activities 5 hours
SITXCOM002 Show social and cultural sensitivity	Core		Practical demonstration and learner practise 5 hours throughout course Lecturer presentation and progression through learning activities 5 hours

PRE-ENROLMENT INFORMATION

about myCourse

SITXWHS001 Participate in safe work practices	Core		Practical demonstration and learner practise 5 hours throughout course Lecturer presentation and progression through learning activities 10 hours
SITTTSL02 Access and interpret product information	Listed Elective		Practical demonstration and learner practise 15 hours throughout course Lecturer presentation and progression through learning activities 15 hours
SITTGDE007 Research and share information on Australian Indigenous cultures	Imported Elective		Practical demonstration and learner practise 10 hours throughout course Lecturer presentation and progression through learning activities 10 hours
HLTAID003 – Provide First Aid	Listed elective		Block delivery over 2 days
Total number of units in Term 3 = 7 units			
SITXCCS003 Interact with customers	Core		Practical demonstration and learner practise 15 hours throughout course Lecturer presentation and progression through learning activities 15 hours
SITXCOM003 Provide a briefing and scripted commentary	Listed Elective		Practical demonstration and learner practise 15 hours throughout course Lecturer presentation and progression through learning activities 10 hours
SITTGDE005 Prepare and present tour commentaries or activities	Listed Elective		Practical demonstration and learner practise 15 hours throughout course Lecturer presentation and progression through learning activities 5 hours
SITTTSL004 Provide advice on Australian destinations	Imported Elective		Practical demonstration and learner practise 15 hours throughout course Lecturer presentation and progression through learning activities 15 hours
Total number of units Term 4 = 4			

PRE-ENROLMENT INFORMATION

about myCourse

Entry Requirements

Search for your course on our website at www.centralregionaltafe.wa.edu.au and you can find detail on the entry requirements for this course.

Career Pathways

Your course provides you with skills and knowledge to enter the workforce in varied job roles as well as further education. Details can be found on our website at www.centralregionaltafe.wa.edu.au

Course Costs

You will find detailed information about your course costs and how the costs are compiled on the Central Regional TAFE website here :

<http://www.centralregionaltafe.wa.edu.au/futurestudents/feespaymentoptions>

Alternatively, check the drop down box for FEES on your course page on the website which will also have details about the course fees.

Textbooks and Learning Materials

Our physical and online library has a wide range of written and electronic resources useful to your course. You can find our online library on the Central Regional TAFE website at :

<http://www.centralregionaltafe.wa.edu.au/currentstudents/librarybookshop>

For on campus students your learning materials for each unit will be provided to you as you progress through the semester and the price is incorporated in your enrolment fees. If you are enrolled off campus other information about your learning materials and purchases will be provided with your enrolment.

(List any extra or recommended text that needs to be purchased and the cost)

Other Course Requirements

Some courses may require you to provide additional resources such as Personal Protective Equipment (PPE) or uniforms. A list is provided below.

Provide details here of uniforms – costs, where to purchase etc, PPE, Toolkits, You may also like to provide information here on co-requisites such as the need for a WWCC or First Aid etc

(Note to Lecturers – if a Third Party is not used delete this text box)

Third Party Providers

In some cases Central Regional TAFE will work with another party to provide training in this course.

PRE-ENROLMENT INFORMATION

about myCourse

Insert details of WHO the Third Party is here and why, how they are engaged in the delivery or assessment.

Kelly to insert statement from Jo about guarantee here

Work Placement

Work Placement provides a practical opportunity for students to develop skills in a real life situations. Ask about traineeship opportunities or online learning if you are working.

STUDY OPTIONS

Central Regional TAFE aims to provide varied options for study to suit your needs. Not all courses are available at all campuses in the same way.

The following options are available in this course at this campus. For additional information about flexible study options at all of our campuses please check the courses pages on the Central Regional TAFE website.

(Face to Face)

- (Duration of course eg: 6 months full time, part time, how many days)
- Students are expected to allow a minimum of 40 hours home study time

YOUR TIMETABLE

Geraldton Campus students can locate their Timetables from the myPortal page on the Central Regional TAFE website. You can also subscribe to your timetable so that you can view in your own Calendar. Details on how to subscribe to your Calendar can be found on the myTimetable link in the Student Portal.

PRE-ENROLMENT INFORMATION

about myCourse

TIME	MONDAY	TUESDAY	WEDNESDAY	THURSDAY	FRIDAY
8:30am- 12:00 am		Central Regional TAFE Room TBA	Touring day		Central Regional TAFE Room TBA
12:00-12:30 LUNCH BREAK					
12:30pm- 3:00pm		Central Regional TAFE Room TBA	Central Regional TAFE Room TBA		